



Speech Pathology and Swallowing

We treat communication and swallowing conditions resulting from:

- stroke
- neurodegenerative diseases (such as Parkinson's, ALS, Alzheimer's)
- head and neck cancer
- developmental delay
- pulmonary diseases and conditions (such as COPD, post-Covid syndrome)
- traumatic brain injury

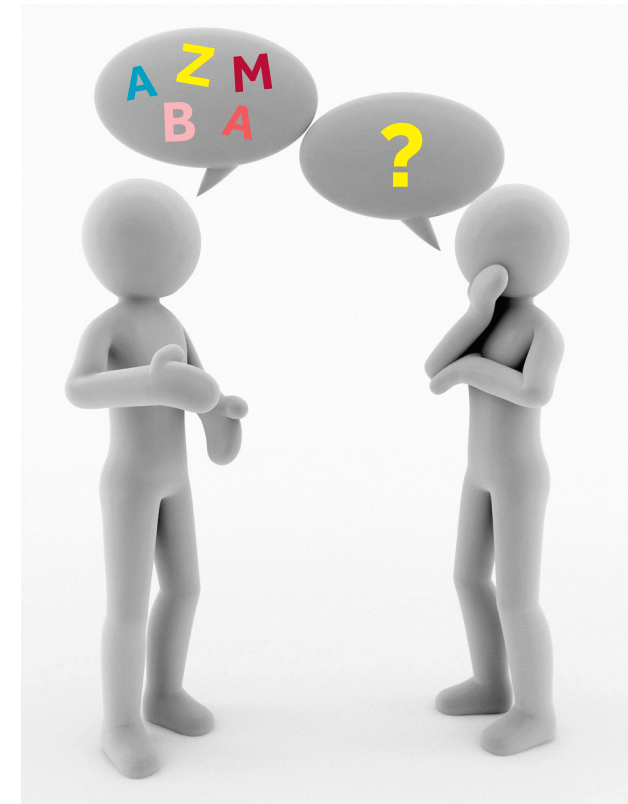
We provide treatment while working closely with medical specialty service teams, such as:

- pediatrics
- neurology
- otolaryngology
- gastroenterology
- pulmonary
- palliative care
- cardiology
- critical care
- allied medical services (respiratory therapy, nutrition and rehabilitation)

A physician's prescription is required for SLP evaluation. Our team is guided by evidence-based practices. We participate in clinical research to provide the highest level of care. Once a prescription is obtained, call (631) 726-8520 to schedule an appointment.

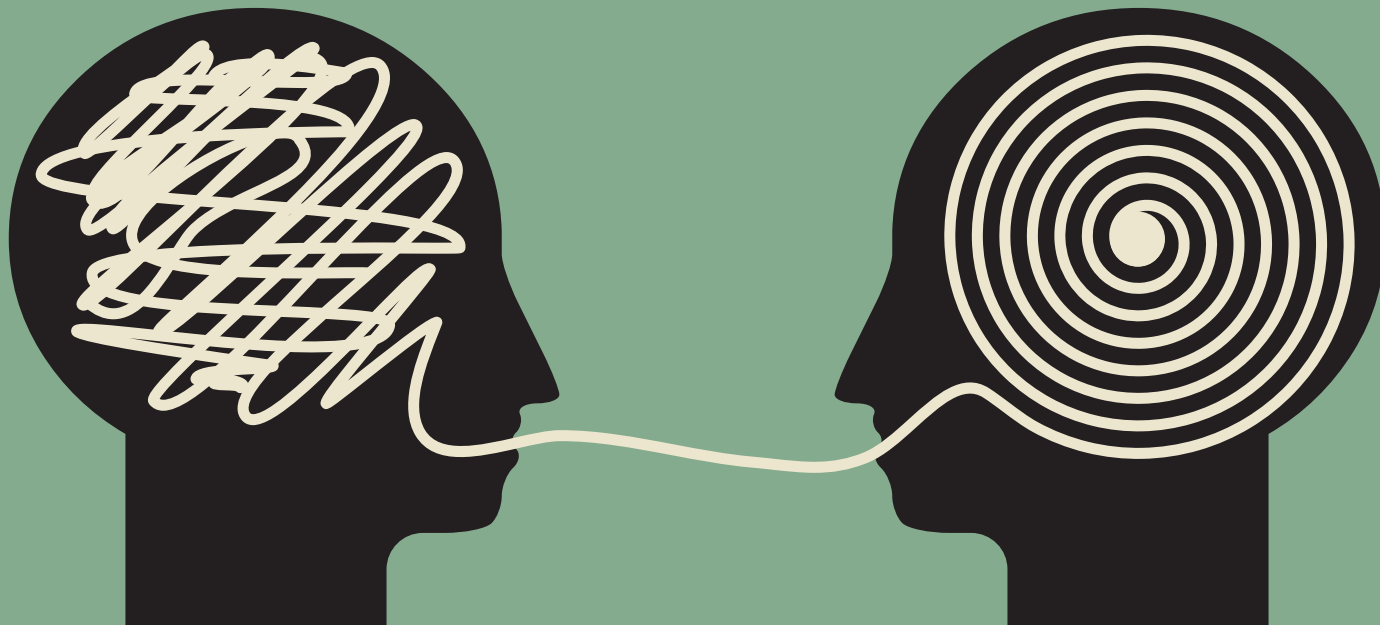
Speech Pathology and Swallowing

Stony Brook Southampton Hospital
240 Meeting House Lane
Southampton, New York 11968
Phone: (631) 726-8520
Fax: (631) 259-3050



We optimize communication and swallowing to help individuals of any age.





Stony Brook Southampton Hospital speech-language pathologists (SLPs) provide:

- high quality adult inpatient and outpatient care and services to prevent, assess, diagnose, and treat speech, language, social communication, cognitive communication, and swallowing disorders
- expert pediatric outpatient care for speech, language, voice and swallowing impairments
- individual and group programs for people living with Parkinson's disease

We treat:

Speech disorders: difficulty producing speech sounds correctly or fluently (e.g., dysarthria or apraxia) or having complications with voice or resonance.

Language disorders: trouble understanding others (receptive language), or sharing thoughts, ideas, and feelings (expressive language). Individuals with language disorders may have difficulty speaking or writing which may involve all aspects of language form, structure (phonology, morphology, syntax) or content (semantics).

Swallowing disorders (dysphagia): feeding and swallowing difficulties may follow an illness, surgery, stroke, or injury. Dysphagia can impact both pediatric and adult patients. An individualized treatment plan is created to optimize the swallowing function by using standardized protocols and state-of-the-art instrumentation to diagnose and treat patients.

Social communication disorders: difficulty understanding the social verbal and nonverbal communication and may have issues:

- communicating socially (greeting, commenting, asking questions)
- speaking appropriately to suit the listener and environment
- following rules for conversation and storytelling (particularly challenging for patients with cognitive-linguistic impairments due to traumatic brain injury or dementia)

Cognitive-communication disorders, such as difficulty:

- organizing thoughts
- focusing
- memory
- planning
- problem solving which may result from a stroke, traumatic brain injury, dementia, or from a congenital condition

Meet Our Department Head



Our SLP team is led by Medical Speech Pathologist Marta Kazandjian, MA CCC-SLP, BCS-S, FPCC, F-ASHA, NBC-HWC. Board-Certified in Swallowing Disorders, Board-Certified in Health and Wellness Coaching and a Fellow of the American Speech Language Hearing Association